

Synthesis and Structure of a Novel Twofold Lactone-Bridged Ternaphthyl¹

Gerhard Bringmann^{*a}, Andreas Wuzik^a, Jürgen Kraus^a, Karl Peters^b, and Eva-M. Peters^b

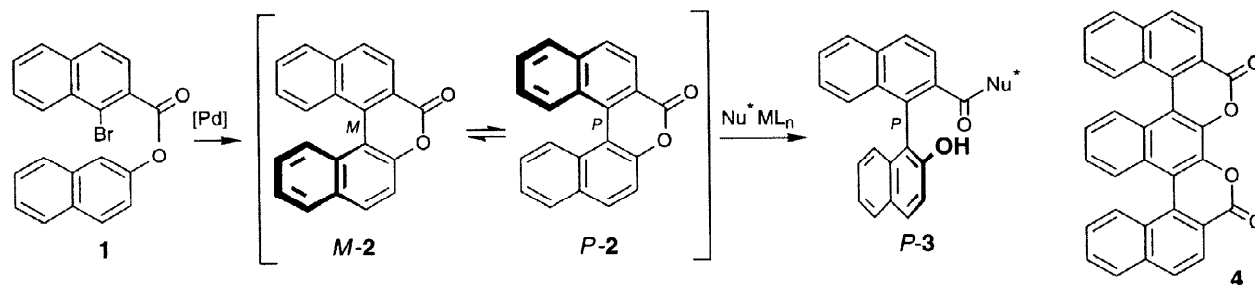
^a Institut für Organische Chemie, Universität Würzburg, Am Hubland, D-97074 Würzburg, Germany
(E-mail: bringman@chemie.uni-wuerzburg.de)

^b Max-Planck-Institut für Festkörperforschung, Heisenbergstraße 1, D-70506 Stuttgart, Germany

Received 4 December 1997; accepted 23 December 1997

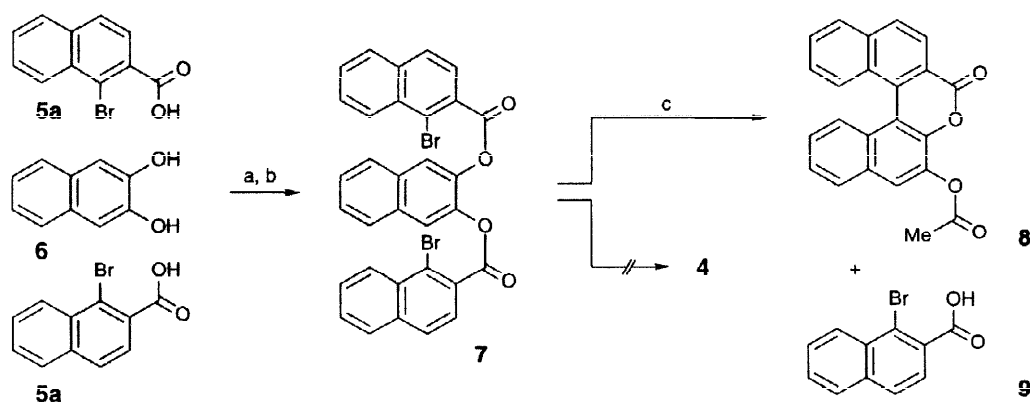
Abstract: The synthesis of the sterically distorted ternaphthyl-bis lactone **4**, by consecutive palladium-catalyzed coupling reactions of ester-type pre-fixed aryl segments, is described. The *meso*-form of this novel teraryl was found to be energetically favored as demonstrated by semiempirical and *ab initio* calculations. It is also found in the crystal, as shown by X-ray investigations. © 1998 Published by Elsevier Science Ltd. All rights reserved.

Ter- and polyaryl materials have been the focus of recent attention owing to their utility in the preparation of liquid crystals,² polymers,³ and molecular recognition hosts.^{4,5} Moreover, ter- and quateraryl systems occur in nature, like the butlerins from the lichen *Relicina connivens*⁶ and the anti-HIV michellamines from the tropical liana *Ancistrocladus korupensis*.⁷ For directed, *i.e.* atropisomer-selective biaryl synthesis, lactone-bridged biaryls like **2**,⁸ as easily built up by intramolecular coupling of ester-type pre-fixed aromatic moieties as in **1**, have proved to be most useful intermediates (see Scheme 1). They are configuratively unstable, giving rise to interconverting atropo-enantiomers (here *M*-**2** ⇌ *P*-**2**), but can be ring opened atropodistereo- or enantioselectively by chiral (metallated) nucleophiles⁹⁻¹¹ to yield the axially stable target biaryl *P*-**3** (or, optionally, the *M*-enantiomer). This preparatively useful and stereochemically interesting concept has been applied to the synthesis of a broad series of natural and unnatural biaryl products, among them promising antimalarial naphthylisoquinoline alkaloids^{12,13} and nerve-growth stimulating mastigophorene analogs.¹⁴ In this paper, we report on the first synthesis of an extended biaryl lactone system, the twofold lactone-bridged ternaphthyl **4**, and on the experimental and quantumchemical investigation of its structure.



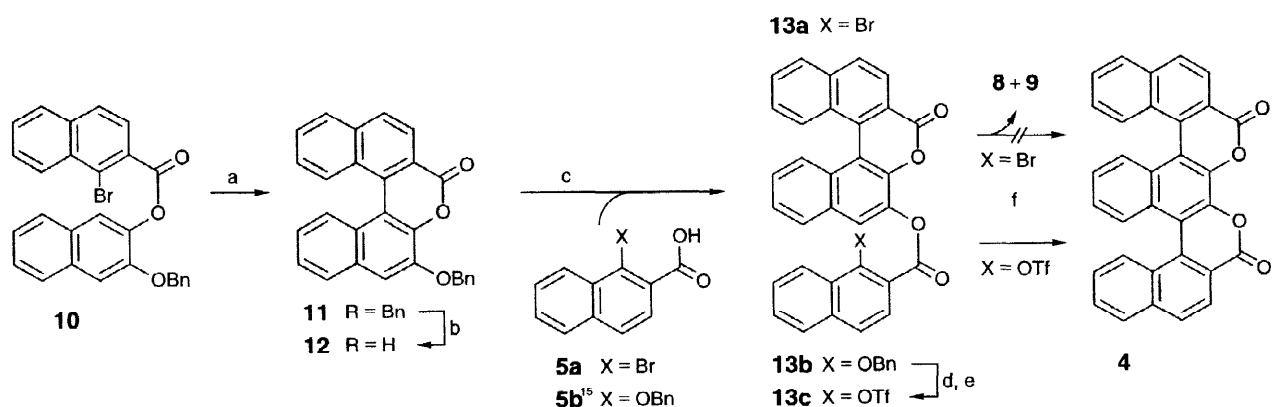
Scheme 1. Stereoselective biaryl synthesis using the 'lactone concept', and the target teraryl **4**.

In analogy to the synthesis of **2**, the easiest-possible strategy to build up **4** should be a *twofold* intramolecular biaryl coupling of **7** (Scheme 2). This dibromo diester¹⁵ was prepared from 2,3-dihydroxynaphthalene (**6**) and 1-bromo-2-naphthoic acid (**5a**).¹⁶ Under various conditions, only the mono-coupled product **8**,¹⁵ with but one axis successfully constructed and the other ester linkage cleaved to the bromoacid **9**, was obtained. Similar cleavage reactions had been observed previously in other cases.^{17,18}



Scheme 2. Attempted rational approach to the synthesis of **4**. Reaction conditions: a) SOCl_2 ; b) NaH , CH_2Cl_2 , 0°C , 87% from **5a**; c) $\text{Pd}(\text{OAc})_2$, PPh_3 , NaOAc , dimethylacetamide (DMA), 130°C , 20%.

The biaryl axes were therefore planned to be built up *consecutively*. For this, as an alternative to the (wasteful) synthesis of **8**, its *O*-benzyl analog **11**¹⁵ was prepared by intramolecular coupling of monoester **10**¹⁵ as obtained from **5a** and the known¹⁹ monobenzyl ether of **6** (Scheme 3). After removal of the benzyl protective group, renewed esterification with **5a** yielded **13a**,¹⁵ the assumed intermediate in the unsuccessful double biaryl coupling of **7** (see above). Regrettably, even this defined monoester failed to undergo a second biaryl formation, but again gave the same cleavage products **8** and **9** as previously obtained from the diester **7**. Because of the excellent quality of the triflate rather than the bromide leaving group in such coupling reactions,²⁰ we analogously prepared the related ester **13c**¹⁵ *via* **13b**.¹⁵ This compound indeed underwent the second biaryl coupling step to give the desired tetraryl **4**,¹⁵ which displays a brilliant blue-green fluorescence.



Scheme 3. Construction of **4** by consecutive coupling steps of **10** and **13c**. Reaction conditions: a) $\text{Pd}(\text{OAc})_2$, PPh_3 , NaOAc , DMA, 100°C , 76%; b) BCl_3 , CH_2Cl_2 , 0°C , 92%; c) $(\text{COCl})_2$, NEt_3 , THF, 0°C , 91%; d) BCl_3 , CH_2Cl_2 , 0°C ; e) TiF_2O , DMAP, py, CH_2Cl_2 , 0°C , 67% from **13b**; f) $\text{Pd}(\text{OAc})_2$, PPh_3 , NaOAc , DMA, 130°C , 37% for **13c** \rightarrow **4**.

Of particular interest was the 3D structure of **4**. For this unprecedented teraryl-bis lactone with its two stereogenic axes, three possible stereoisomers are imaginable: the two enantiomeric C_2 -symmetric P,P - and M,M -forms, *i.e.* with the two axes homochiral (see Fig. 1), and M,P -**4**, the achiral *meso*-form, with the two axes differently configured. In NMR, the compound presents itself as a single species, which, given the relatively slow interconversion for **2**,⁸ may mean that **4** occurs either as an enantiomeric mixture of the two C_2 -symmetric forms, P,P - and M,M -**4**, or as the *meso*-form M,P -**4**. Semiempirical²¹ (AM 1 and PM 3) and *ab initio*²² calculations (Hartree Fock) predict the *meso*-form M,P -**4** to be energetically favored by 15.4-19.3 kJ/mol over the C_2 -symmetric helically distorted enantiomers P,P -**4** and M,M -**4** in the gas phase (Table 1). This would correspond to a 99.6:0.4 to 99.9:0.1 predominance of the *meso*-form, the C_2 -symmetric forms apparently therefore not being visible in NMR.

Table 1. Calculated semiempirical energies ΔH_f [kJ/mol] and *ab initio* energies E [Hartrees], and relative heats of formation $\Delta\Delta H_f$ [kJ/mol] of M,P -**4** and P,P -**4**.

Method	M,P - 4	P,P - 4	$\Delta\Delta H_f$
AM1	ΔH_f -963.35	-948.00	-15.35
PM3	ΔH_f -1029.23	-1011.65	-17.58
B3LYP/6-31G*//RHF/6-31G*	E -1529.55938360	-1529.55205667	-19.25

The semiempirical ΔH_f values and the *ab initio* energies E are ZPVE corrected (1 Hartree = 2627.26 kJ/mol)

Crystals suited for an X-ray diffraction analysis²³ were grown from dichloromethane, with the solvent being a stoichiometric constituent of the crystal (see Fig. 1). The crystal structure analysis clearly confirms the anticipated constitution and reveals **4** to crystallize out in a remarkably distorted *meso*-form.

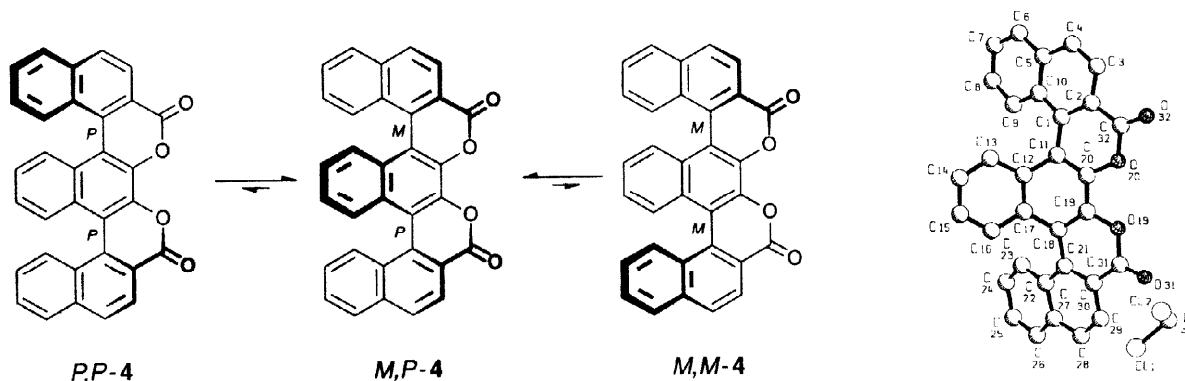


Fig. 1. Presumable interconversion of the three possible atropisomeric forms of **4** and structure of M,P -**4**· CH_2Cl_2 in the crystal.

The atroposelective ring cleavage of **4**, as well as the preparation of even higher lactone-bridged oligo- and polyaryls, is under investigation.

ACKNOWLEDGEMENTS

This work was supported by the Deutsche Forschungsgemeinschaft (Sonderforschungsbereich 347 "Selektive Reaktionen Metall-aktivierter Moleküle"). We are indebted to Dr. B. Schöner and Dr. S. Harmsen for orienting work in this field and Mrs. P. Henschel for valuable technical assistance.

REFERENCES AND NOTES

1. Part 65 in the series "Novel Concepts in Directed Biaryl Synthesis"; for part 64, see Bringmann, G.; Hinrichs, J; *Tetrahedron: Asymmetry*, in press.
2. Chernova, N.; Losevea, M.; Pzhidaev, E.; Korotkova, N. *Ferroelectrics* **1993**, *138*, 95-101.
3. Marin, G.H.; Horak, V. *J. Org. Chem.* **1994**, *59*, 4267-4271.
4. Lee, W.Y.; Park, C.H.; Kim, H.J.; Kim, S. *J. Org. Chem.* **1994**, *59*, 878-884.
5. Galán, A.; Sutherland, A.J.; Ballester, P.; Rebek, J. *Tetrahedron Lett.* **1994**, *30*, 5359-5362.
6. Elix, E.A.; Gaul, K.L.; Hockless, D.C.R.; Wardlaw, J.H. *Aust. J. Chem.* **1995**, *48*, 1049-1053.
7. Boyd, M.R.; Hallock, Y.F.; Cardellina II, J.H.; Manfredi, K.P.; Blunt, J.W.; McMahon, J.B.; Buckheit, R.W.; Bringmann, G.; Schäffer, M.; Cragg, G.M.; Thomas, D.W.; Jato, J.G. *J. Med. Chem.* **1994**, *37*, 1740-1745.
8. Bringmann, G.; Schöner, B.; Schupp, O.; Peters, K.; von Schnering, H.G. *Liebigs Ann. Chem.* **1994**, 91-97.
9. Bringmann, G.; Breuning, M.; Busemann, S.; Hinrichs, J.; Pabst, T.; Stowasser, R.; Tasler, S.; Wuzik, A.; Schenk, W.A.; Kümmel, J.; Seebach, D.; Jaeschke, G. In *Stereoselective Reactions of Metal-Activated Molecules*, Werner, H.; Schreier, P., Eds.; Vieweg: Braunschweig, 1998; in press.
10. Bringmann, G.; Ewers, C.L.J.; Göbel, L.; Hartung, T.; Schöner, B.; Schupp, O.; Walter, R.; In *Selective Reactions of Metal-Activated Molecules*; Werner, H.; Griesbeck, A.G.; Adam, W.; Bringmann, G.; Kiefer, W., Eds.; Vieweg: Braunschweig, 1992; pp. 183-186.
11. Bringmann, G.; Hartung, T. *Tetrahedron* **1993**, *49*, 7891-7902.
12. Bringmann, G.; Pokorny, F. In *The Alkaloids*, vol. 46, Cordell, G.A., Ed.; Academic Press: New York, 1995; pp. 127-271.
13. Bringmann, G.; Holenz, J.; Weirich, R.; Rübenacker, M.; Funke, C.; Boyd, M.R.; Gulakowski, R. J.; François, G. *Tetrahedron*, in press.
14. Bringmann, G.; Pabst, T.; Busemann, S.; Peters, K.; Peters, E.-M. *Tetrahedron*, in press.
15. All new compounds have been fully characterized by spectroscopic and analytic methods. Details will be reported in a full paper.
16. Hellwinkel, D.; Bohnet, S. *Chem. Ber.* **1987**, *120*, 1151-1173.
17. Bringmann, G.; Hartung, T.; Göbel, L.; Schupp, O.; Ewers, C.L.J.; Schöner, B.; Zagst, R.; Peters, K.; von Schnering, H.G.; Burschka, C. *Liebigs Ann. Chem.* **1992**, 225-232.
18. Takamitsu, H.; Takashiro, E.; Takashi, M.; Suzuki, K. *J. Am. Chem. Soc.* **1994**, *116*, 1004-1015.
19. Prajer, L. *Roczniki Chem.* **1957**, *31*, 1067-1068 [*Chem. Abstr.* **1958**, *52*, 8111a].
20. Cacchi, S.; Ciattini, P.G.; Morera, E.; Ortari, G. *Tetrahedron Lett.* **1988**, *29*, 3117-3120.
21. Performed on SGI IRIS INDIGO R4000/R440 workstations with the program package VAMP 6.2.
22. Performed on a Fujitsu VPP 700 computer using the Gaussian 94 program.
23. Cell data for **4**: C₃₂H₁₆O₄ · CH₂Cl₂, monoclinic, space group P2₁/n, a = 1073.0(1) pm, b = 1326.0(1) pm, c = 1745.7(2) pm, β = 101.809(7)°. Additional data for this structure have been submitted to the Cambridge Crystallographic Data Centre.